

**REGIONAL SPECIALISED METEOROLOGICAL CENTRE-TROPICAL CYCLONES, NEW DELHI
TROPICAL WEATHER OUTLOOK**

DEMS-RSMC TROPICAL CYCLONES NEW DELHI DATED 05.06.2023

TROPICAL WEATHER OUTLOOK FOR NORTH INDIAN OCEAN (THE BAY OF BENGAL AND THE ARABIAN SEA) VALID FOR NEXT 120 HOURS ISSUED AT 0600 UTC OF 05.06.2023 BASED ON 0300 UTC OF 05.06.2023.

BAY OF BENGAL:

YESTERDAY'S CYCLONIC CIRCULATION OVER EASTCENTRAL BAY OF BENGAL OFF MYANMAR COAST PERSISTED OVER THE SAME REGION AT 0300 UTC OF TODAY, THE 4TH JUNE 2023.

SCATTERED TO BROKEN LOW AND MEDIUM CLOUDS WITH EMBEDDED INTENSE TO VERY INTENSE CONVECTION LAY OVER EASTCENTRAL & SOUTHEAST BAY OF BENGAL AND ANDAMAN SEA {MINIMUM CLOUD TOP TEMPERATURE (CTT) MINUS 90⁰C}. SCATTERED LOW AND MEDIUM CLOUDS WITH EMBEDDED WEAK TO MODERATE CONVECTION LAY OVER SOUTHWEST & WESTCENTRAL BAY OF BENGAL.

PROBABILITY OF CYCLOGENESIS (FORMATION OF DEPRESSION) DURING NEXT 120 HRS:

24 HOURS	24-48 HOURS	48-72 HOURS	72-96 HOURS	96-120 HOURS
NIL	NIL	NIL	NIL	NIL

ARABIAN SEA:

A CYCLONIC CIRCULATION FORMED OVER SOUTHEAST ARABIAN SEA AT 0300 UTC OF TODAY, THE 5TH JUNE 2023. UNDER ITS INFLUENCE, A LOW PRESSURE AREA IS VERY LIKELY TO FORM OVER THE SAME REGION DURING NEXT 24 HOURS. IT IS LIKELY TO MOVE NEARLY NORTHWARDS AND INTENSIFY INTO A DEPRESSION OVER SOUTHEAST AND ADJOINING EASTCENTRAL ARABIAN SEA DURING SUBSEQUENT 48 HOURS.

SCATTERED TO BROKEN LOW AND MEDIUM CLOUDS WITH EMBEDDED INTENSE TO VERY INTENSE CONVECTION LAY OVER SOUTH ADJOINING CENTRAL ARABIAN SEA {MINIMUM CLOUD TOP TEMPERATURE (CTT) MINUS 90⁰C}. SCATTERED LOW AND MEDIUM CLOUDS WITH EMBEDDED MODERATE TO INTENSE CONVECTION LAY OVER LAKSHADWEEP ISLANDS AREA AND ISOLATED WEAK TO MODERATE CONVECTION LAY OVER COMORIN AREA.

PROBABILITY OF CYCLOGENESIS (FORMATION OF DEPRESSION) DURING NEXT 120 HRS:

24 HOURS	24-48 HOURS	48-72 HOURS	72-96 HOURS	96-120 HOURS
NIL	NIL	LOW	MOD	MOD

Remarks

(A) BAY OF BENGAL:

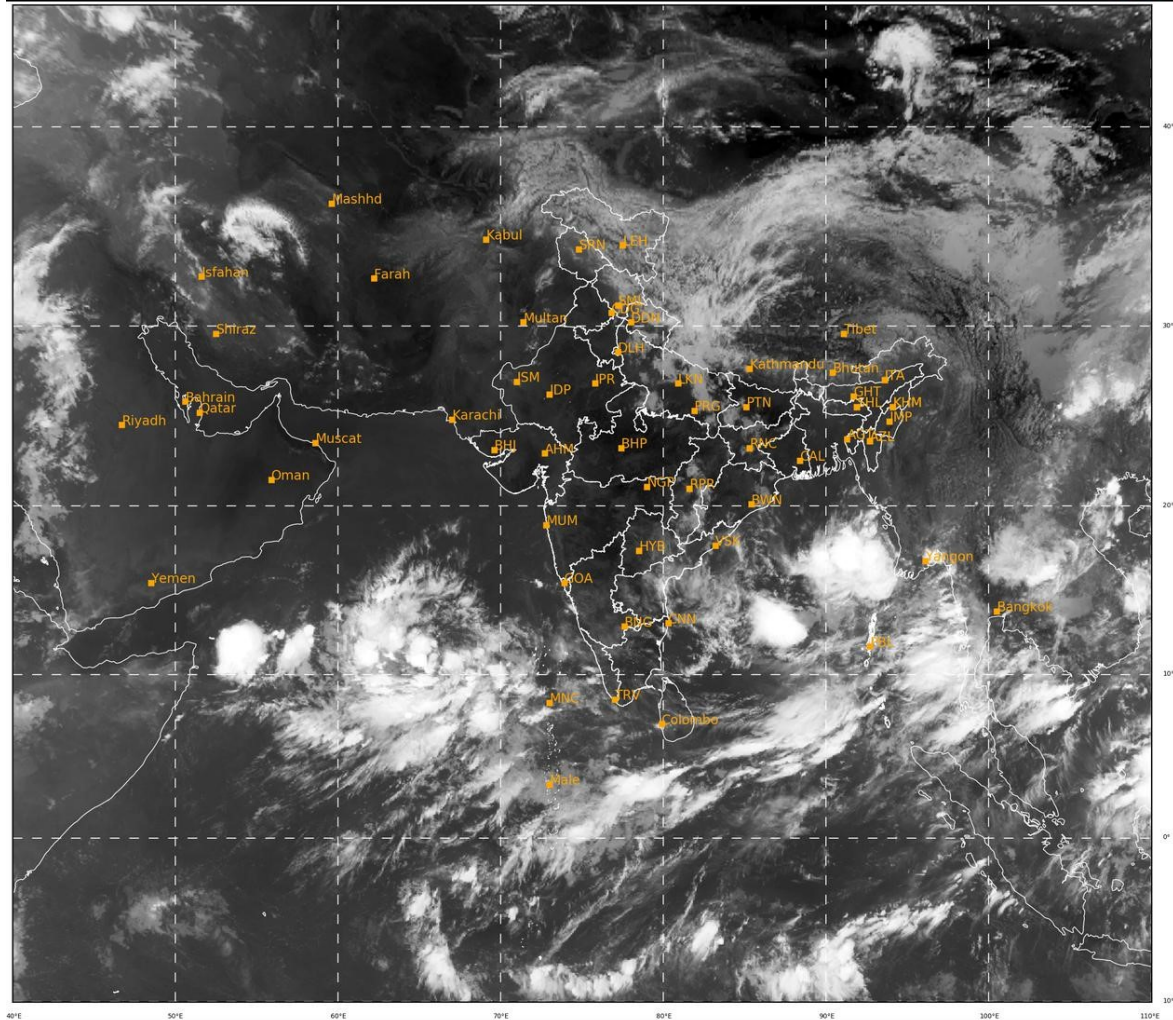
ONLY NCUM IS INDICATING DEVELOPMENT OF A DEPRESSION OVER MYANMAR AND ADJOINING BANGLADESH COASTS AROUND 10TH JUNE WITH NORTH-NORTHEASTWARDS MOVEMENT OVER MYANMAR. OTHER MODELS LIKE GFS GROUP AND ECMWF ARE NOT INDICATING ANY SYSTEM OVER BAY OF BENGAL. THESE MODELS ARE ONLY INDICATING A CYCLONIC CIRCULATION OFF MYANMAR COAST. CONSIDERING GUIDANCE FROM VARIOUS MODELS, PROBABILITY OF CYCLOGENESIS OVER BOB IS KEPT AS NIL FOR NEXT FIVE DAYS.

(B) ARABIAN SEA:

ENVIRONMENTAL CONDITIONS INDICATE THAT FROM 7TH JUNE ONWARDS, MJO (PHASE 2 WITH AMPLITUDE CLOSE TO 1) AND EQUATORIAL ROSSBY WAVES, KELWIN WAVES ALONGWITH WESTERLY WINDS (5-7 MPS) ARE LIKELY TO PREVAIL OVER SOUTH AND CENTRAL AS.

ECMWF AND NCEP GFS ARE INDICATING DEVELOPMENT OF DEPRESSION AROUND 7TH JUNE OVER SOUTHEAST & ADJOINING EASTCENTRAL AS AND IMD GFS AROUND 8TH OVER SOUTHEAST AS. NCUM IS NOT INDICATING DEVELOPMENT OF DEPRESSION OVER AS. THERE IS NOW CONVERGENCE AMONG VARIOUS MODELS WRT AREA OF GENESIS OVER SOUTHEAST & ADJOINING EASTCENTRAL AS AROUND 8TH. BOTH ARE INDICATING INTENSIFICATION INTO SEVERE CATEGORY OF STORM AND NORTH-NORTHWESTWARDS MOVEMENT TOWARDS OMAN-YEMEN COASTS. IMD GFS FORECAST IS NOT CONSISTENT. AFTER 8TH, IT IS RAPIDLY DISSIPATING THE SYSTEM AND AGAIN IT SHOWS SUDDEN INTENSIFICATION INTO AN INTENSE STORM ON 12TH OVER SOUTHEAST AS WITH MOVEMENT TOWARDS NORTH MAHARASHTRA COAST. NCUM IS INDICATING ONLY CYCLONIC CIRCULATION OVER WESTCENTRAL AS DURING 8TH-10TH. CONSIDERING GUIDANCE FROM VARIOUS MODELS, PROBABILITY OF CYCLOGENESIS IS KEPT AS LOW ON DAY-3 & MODERATE ON DAY- 4 & 5 DURING 7TH-9TH JUNE.

BOTH THE BASINS ARE UNDER CONTINUOUS WATCH. NEXT UPDATE WILL BE ISSUED AT 0600 UTC OF 6TH JUNE.



383

931

IMD, DELHI

Cloud distribution: (a) Isolated: <25%, Scattered:25-50%, Broken: 51-75%, Solid:>75%, Convection Intensity: (a) Weak: Cloud Top Temperature (CTT) >-25°C, (b) Moderate: CTT: - 25°C to -40°C, (c) Intense: CTT: - 41°C to -70°C and (d) Very Intense: : Less than -70°C
PROBABILITY OF CYCLOGENESIS (FORMATION OF DEPRESSION): NIL: 0%, LOW: 1-33%, , MODERATE: 34-66% AND HIGH: 67-100%
This is a guidance Bulletin for WMO/ESCAP Panel Member countries. Visit respective National websites for Country specific Bulletins